

Port Middle School - Project Outline

MAY 2023



Prepared By:
Port School



About Port School



01

Port School



Port School is rapidly growing and emerging as a high-end provider of re-engagement education and care programs for socially disadvantaged and at risk youth. Young people deserve to have the world at their feet, the opportunity to realise their dreams, sound mental and physical health and at least one adult who believes in them, pushes them and offers unconditional support and advice. Sadly, for many young people, none or few of these essentials are present in their lives. Port School aims to fill the void, mend the bridges and give real hope and possibility back to our students and emerging young adults.

Anne Gee
Port School Chair



About the Port Middle School

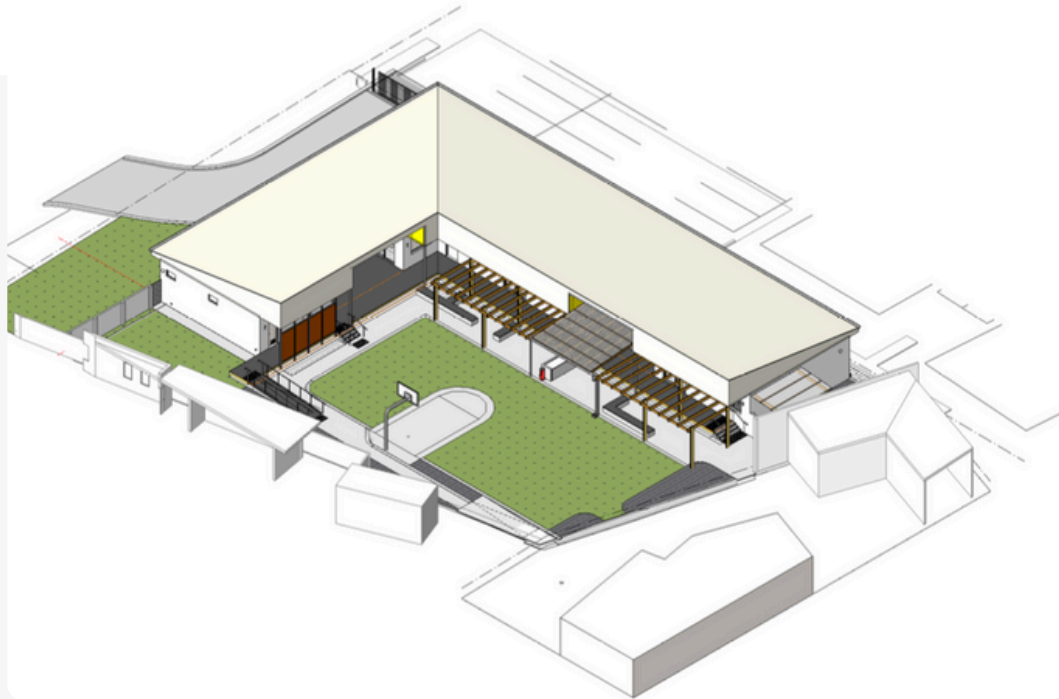


Port Middle School is the starting point for all Year 8 and 9 students entering the School. It operates slightly differently to a conventional secondary school system, and to the Port Senior School, in that students complete all their classes with the same teachers and education assistants. These educators cover the Western Australian Curriculum, with a critical focus on literacy and numeracy.

The key goal is to bring students, who have not had success in mainstream environments, up to an educational standard that will help them flourish once they enter the Senior School.

One of the most important aspects of this program is the time spent changing the fixed mindset and perception of students, from one of 'failure' at school, to believing that they can learn, and that by attending every day and participating in class, they are becoming smarter.





Middle School Project.....

In late 2019 Port School began discussions around the potential of purchasing an adjacent block of land and how to use it to maximise the potential of the school. It was decided that the space would be an ideal size and location to expand the current middle school to accommodate more students.

After purchasing the site in 2020 Port School began informal discussions with The Fulcrum Agency around development of the site with surveying of the land and formal proposal submitted late that year. Design development along with the funding and grant processes continued throughout 2021 with everything completed ready for tender by the end of that year.

Commitment to Timelines

The beginning of 2022 saw the site cleared, tender process followed, building permit received and formal construction period begin. With Western Projects being awarded the tender practical completion was set for December 2022.

The build began in April 2022 with Western Projects along with The Fulcrum Agency working hard to commit to timelines that would have the build completed for the start of the 2023 school year. Although there were challenges along the way the commitment of the teams meant the project kept moving along and any hurdles were overcome quickly and professionally.

December saw the practical completion dates pushed back to early 2023 and the pressure ramped up to get the building completed for the incoming students. By the end of January and with the pressure of students along with incoming furniture, it was all hands-on deck to get a hand over from Western Project. The keys were officially handed over on the first day of school with the students given an extra day holiday before being welcomed in on the 2nd February 2023.



First Intake

The middle school has now grown into two classrooms for the year 8 and 9 students with the third classroom to be populated from the beginning of 2024. There has been a very positive reaction to the building, both from the staff and the students. The Port Middle School students now have a state-of-the-art facility that demonstrates the commitment that Port School has to its students.

Port School continues to strive to be an example of best practice when it comes to working with at-risk students and disadvantaged communities. This project reflects that goal.

*Port School -
Providing a real
alternative for
adolescents who
need a different
kind of school.*



Staff & Team Members



Port Middle School has a team of highly qualified staff that are excellent in nurturing, supporting and educating students with a wide variety of social, relational and educational needs.

Each classroom has a teacher and support staff member that are responsible for the day to day needs of the students. Port has a strong focus on pastoral care and communication between teachers, support staff, students and parents is critical in the development and growth in these students.



Official Opening



The Port Middle School was officially opened on Thursday 18th May 2023. It was a beautiful day that opened with a powerful smoking ceremony and acknowledgement of country conducted by staff members Patrysha Mourish and Dennis Colbung.

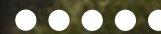


It was a very well attended event with community stakeholders, agencies and professionals as well as government bodies well represented among the guests. Speakers included Federal Labor Member for Fremantle Josh Wilson, Cockburn Mayor Logan Howlett, Deputy Principal Mike Gilbert and Head of Middle School Matt Hopkins. The highlight of the speeches was Year 12 student Brooke Riley reminiscing about her time in the middle school.



Brooke Riley

Currently year 12 -
started year 8 in
Port Middle School



“When I first walked into the Middle school what stood out for me were the friendly faces of the staff and students, some familiar and some not but I felt an instant sense of community.”

“Middle School helped me understand what it means to belong to a community and get my education back on track. For me Port has been has given me a voice and given me a sense of connection to my community. The middle school supported me in ways I didn’t even know I needed support and the bond and connection with students was very obvious and Matt and John were mentors in so many different ways.”

“I have so many memories, happy and sad and they shaped the person I am today.”

*Middle School
helped me
understand what
it means to
belong to a
community and
get my education
back on track.*

Josh Wilson MP

Federal Labor Member for Fremantle



“This is an incredible project that supports the work of a remarkable school. I congratulate Port School’s leadership for their vision and commitment in creating the new middle school facilities that represent another bold step forward in the school’s transformative educational project.”

“The students, teachers, and staff at Port School absolutely deserve the kind of state-of-the-art and from-the-heart classrooms, outdoor learning areas, and other amenities that local architects (Fulcrum) and builders have helped them create,”

I’m always amazed at the courage and persistence of the students, and the care and dedication of the teachers



